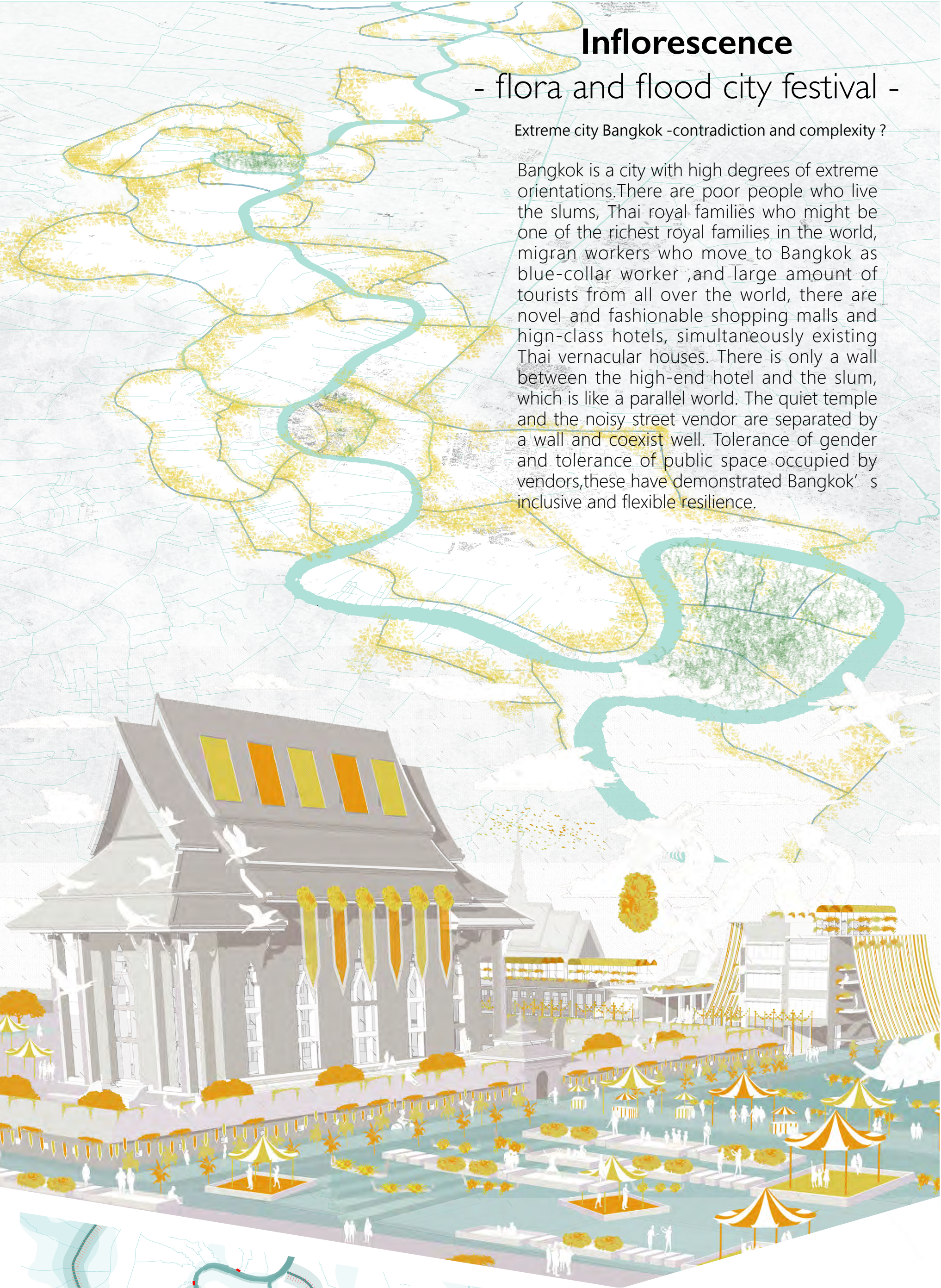


Inflorescence

- flora and flood city festival -

Extreme city Bangkok -contradiction and complexity ?

Bangkok is a city with high degrees of extreme orientations. There are poor people who live the slums, Thai royal families who might be one of the richest royal families in the world, migrant workers who move to Bangkok as blue-collar worker, and large amount of tourists from all over the world, there are novel and fashionable shopping malls and high-class hotels, simultaneously existing Thai vernacular houses. There is only a wall between the high-end hotel and the slum, which is like a parallel world. The quiet temple and the noisy street vendor are separated by a wall and coexist well. Tolerance of gender and tolerance of public space occupied by vendors, these have demonstrated Bangkok's inclusive and flexible resilience.



Building canopy

Building Structure

Acquisition Platform

Working Platform

Floating Platform

Working Platform

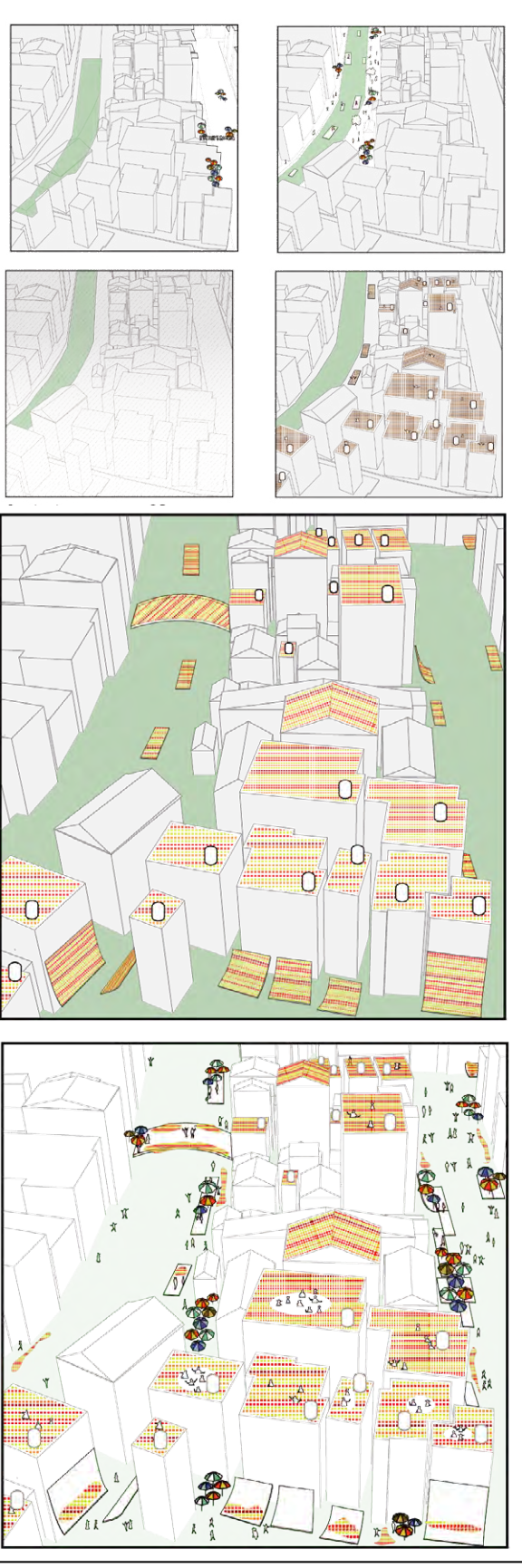
Selling Platform

Transport Bridge

Master Plan

Concept

An inflorescence is a group or cluster of flowers arranged on a stem that is composed of a main branch or a complicated arrangement of branches. We regard the Chao Phraya River as the flower peduncle, the tributaries as the rachis, the irrigation channels and the canals as the pedicel, and the land is the blooming flower.



Blossom&Water

The reason why the flowers are proposed is mainly because of the local culture. Thai people have religious beliefs about the royal family and Buddhism. These are deeply rooted in their hearts. Furthermore, Thai people lived closely with the water.

When faced with the arrival of rain and flood, which is seen as the gift of nature in the past. We try to change the impression that the river was regarded as the back of the city and the neighborhood avoidance facility.

The site - Cannal

About the location of the city festival, we chose the Second Ring Canal, which starts from Phra Sumen Fort and ends at Statue of King Rama I, as a model urban design area. First of all, the temples play the center of faith and also the place where many festivals take place. By arranging the open spaces into stagnant pools. The flood can go through the temple plazas as an immediate stagnation, and when the water volume accumulates to a certain water level, the flower boat can also be placed on the water surface to create another landscape, and it can also be used for

irrigation plants. In terms of residential strategy, we hope to use the existing roof to build a roof garden or orchid shed, and to add a planting flower wall to the façade. Through the addition of existing buildings, greening the streetscapes, and bringing flowers to their own homes, local residents can also contribute to the festival, which in turn allows residents to have another layer of interaction with tourists. And through the adoption of flower planting, linking local Buddhist beliefs with temples and believers.

Park and Openspace

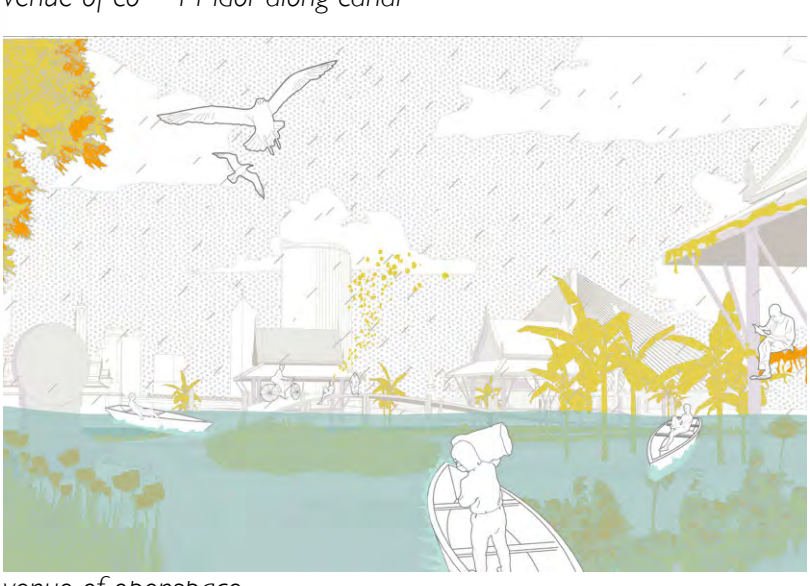
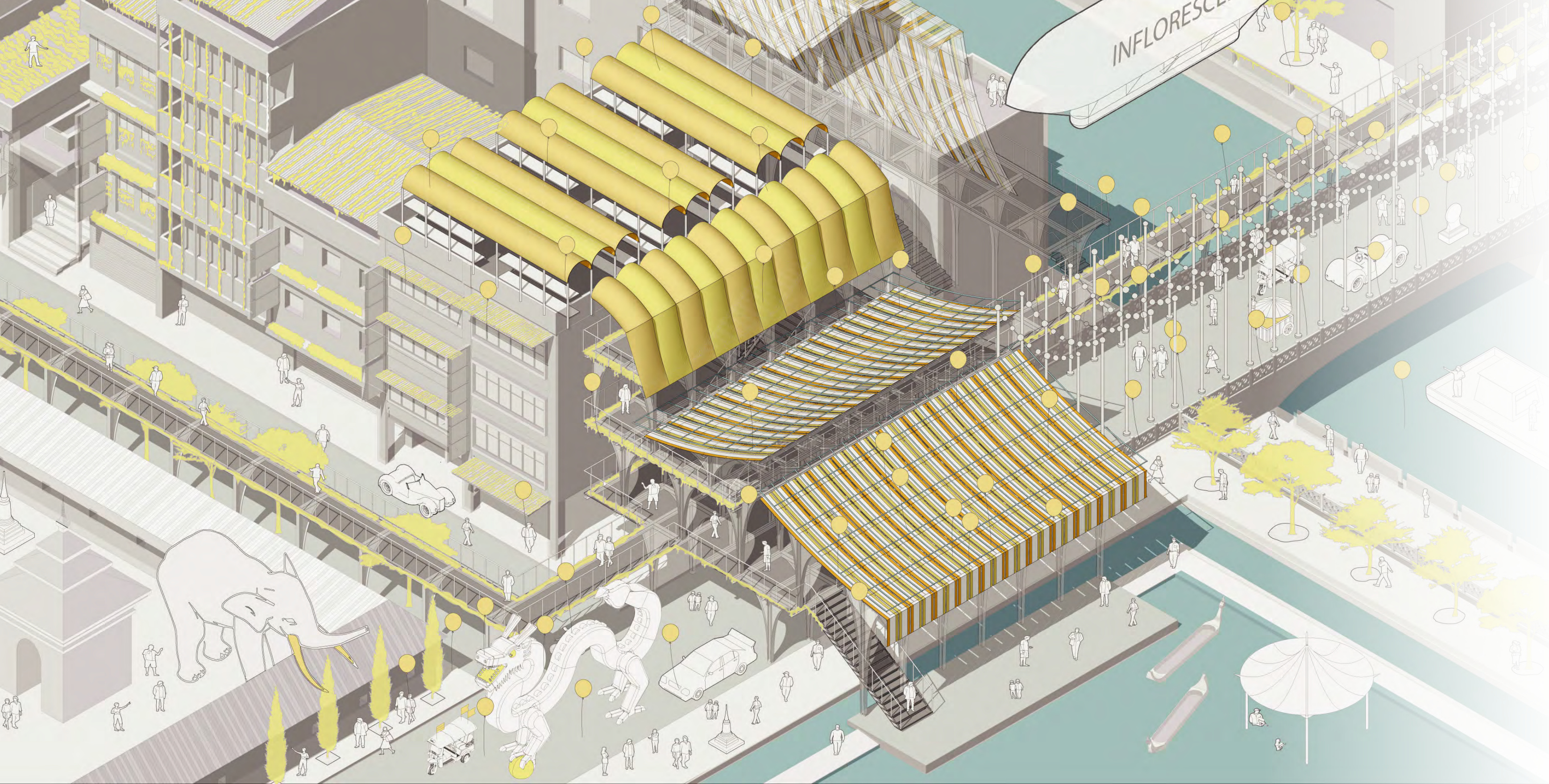
Bangkok is a high-density city, but the density of the park is not high. When the parks facing floods and heavy rains, it is not only used for flood storage, but also an important planting area. It is like the farmland

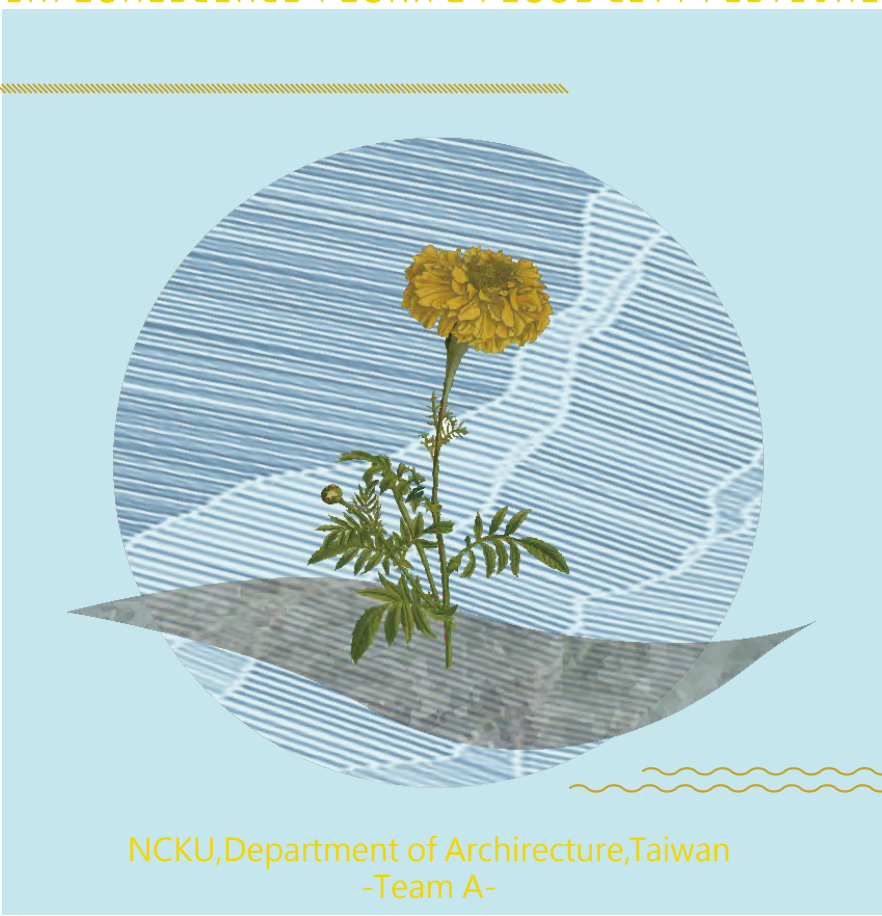
in the city. It can bloom all kinds of flowers. When the rain comes, it is also possible to have different activities due to changes in the river's water level.

Road System

Flora EXPO Area

Water System





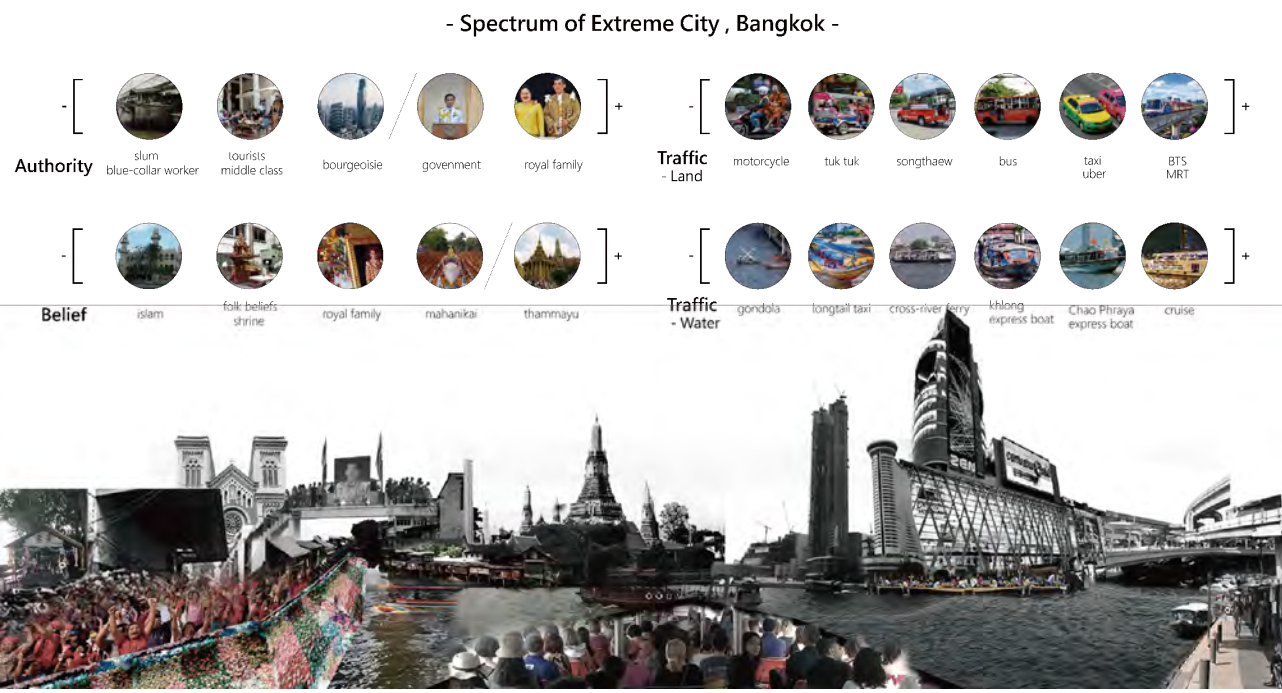
NCKU,Department of Architecture,Taiwan
-Team A-

-Abstract-

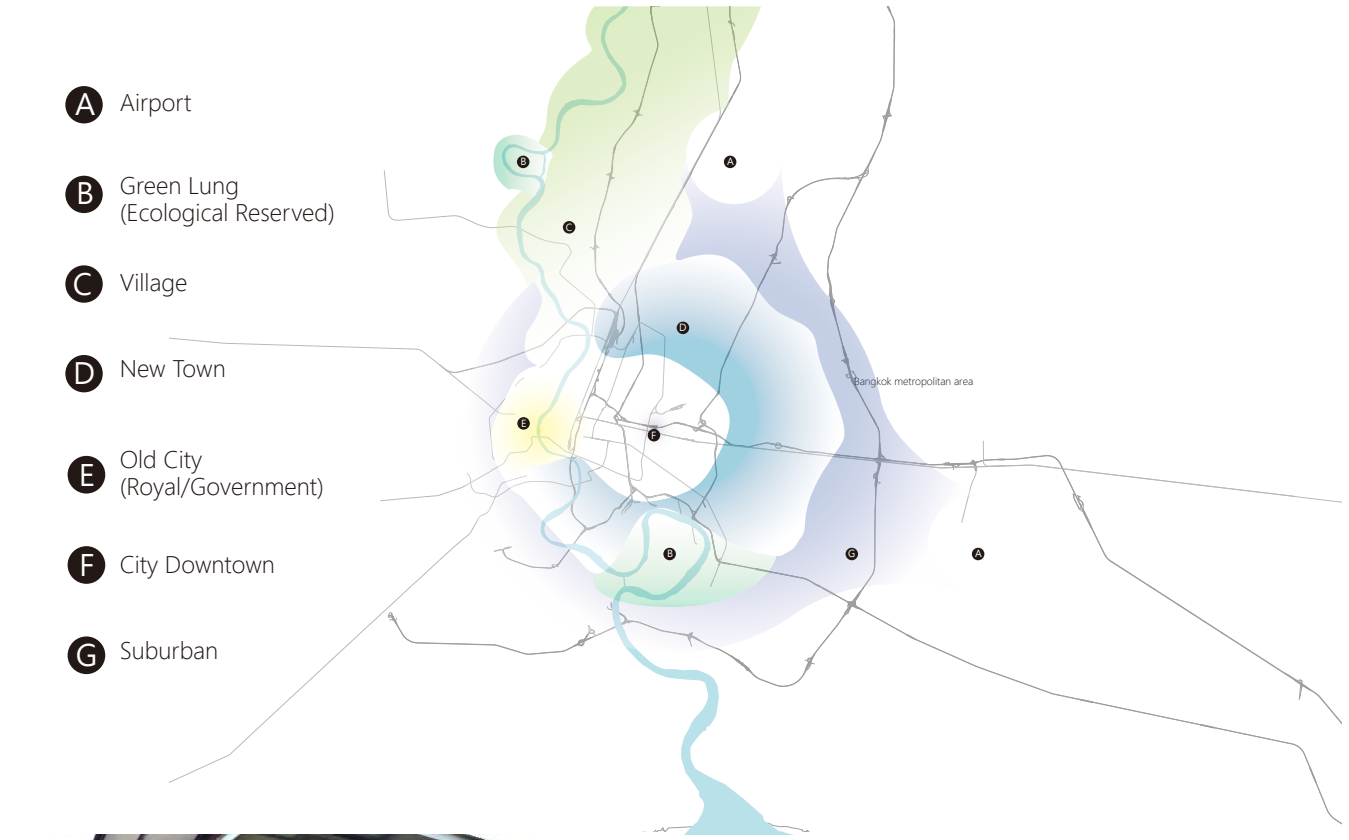
An inflorescence is a group or cluster of flowers arranged on a stem that is composed of a main branch or a complicated arrangement of branches. We regard the Chao Phraya River as the flower peduncle, the tributaries as the rachis, the irrigation channels, and the canals as the pedicel, and the land is the blooming flower.

In Bangkok, which is a city full of extremes, we found two clues to sew these extremes and present the local resilience. Firstly, flowers, that are universally visible from the royal family to the poor, the industry to the faith. Secondly, floods, Bangkok is threatened by the flooding of the Chao Phraya River and the flooding caused by heavy rains, but from another perspective it is also irrigating and fertilizing the land. We believe that the resilience of Bangkok is based on the intertwining of flowers and floods.

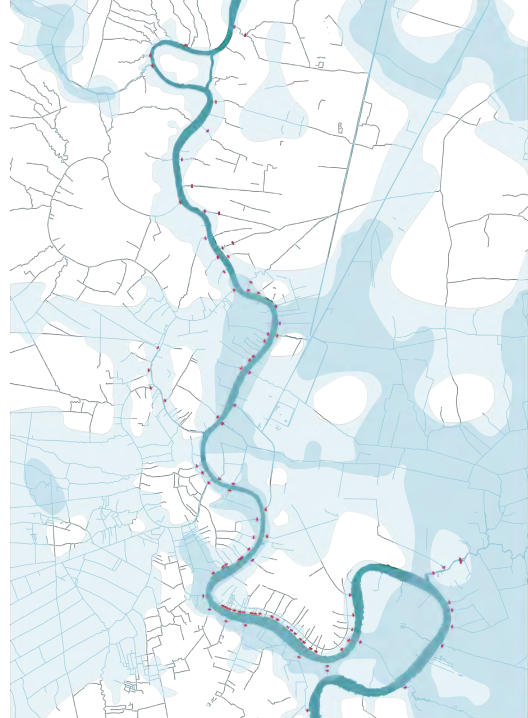
Bangkok is a city with numerous extreme attitudes. There are poor people who live in the slums, the Thai royal family, who might be one of the richest in the world, foreign blue-collar laborers moving there, and a large amount of tourists from all over the world. There is only a wall between high-end hotels and slums, which is like a parallel universe. The quiet temples and noisy street vendors are separated by fences and co-exist well. Gender tolerance, and tolerance of occupied public space by vendors. These have demonstrated Bangkok's inclusive and flexible resilience.



In the past, Thai people lived closely to the water. The arrival of rain and flood, was seen to be the gift of nature. For Thailand, which is an agricultural country, water is an important resource that ensures irrigation. However, with developments from modernization, the appearance of Bangkok has been greatly changed, making people no longer so dependent on rainwater and rivers. Those ever important canals have been gradually reduced or narrowed, because of the construction of onshore roads. Or the blank space for temporary water storage has become the land of Concrete Jungle. All of the above made Bangkok need a resilience design strategy urgently, so we figure out two aspects, that is, "the flowers" and "the flood" after observation and analysis of the site, and take them into our design.



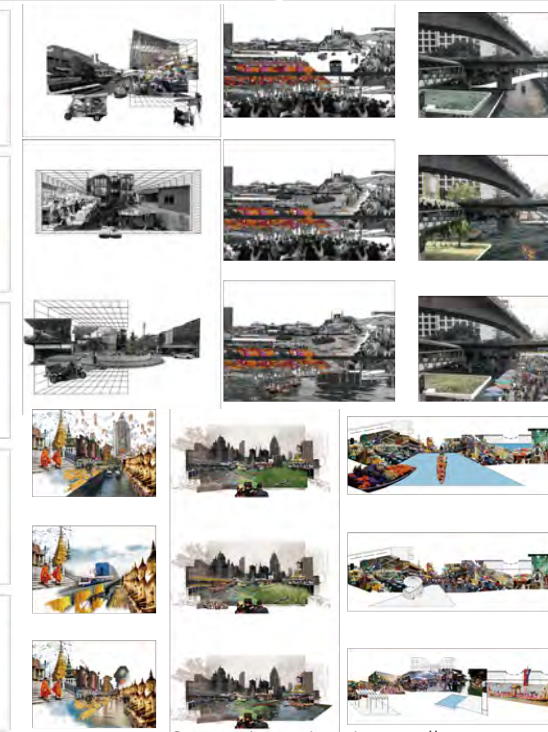
The Chao Phraya River has been the lifeblood of Thailand as the economic and life center since ancient times, where cultivated land in Thailand is centralized. The flow of the Chao Phraya River changed drastically with seasons, varies from Wet Season to Dry Season by over ten times more. In Wet season, river flooded, bringing fertile soil, and irrigating paddy field that basically relied on natural flooding. With warm climate, abundant rainfall, regular river flooding and fertile land, most areas are suitable for planting rice. The rice output reached the top in the world. In the lower reaches of the Chao Phraya River, canals are interlaced. The plain of the Chao Phraya River has developed into the most centralized and economically developed region in Thailand.



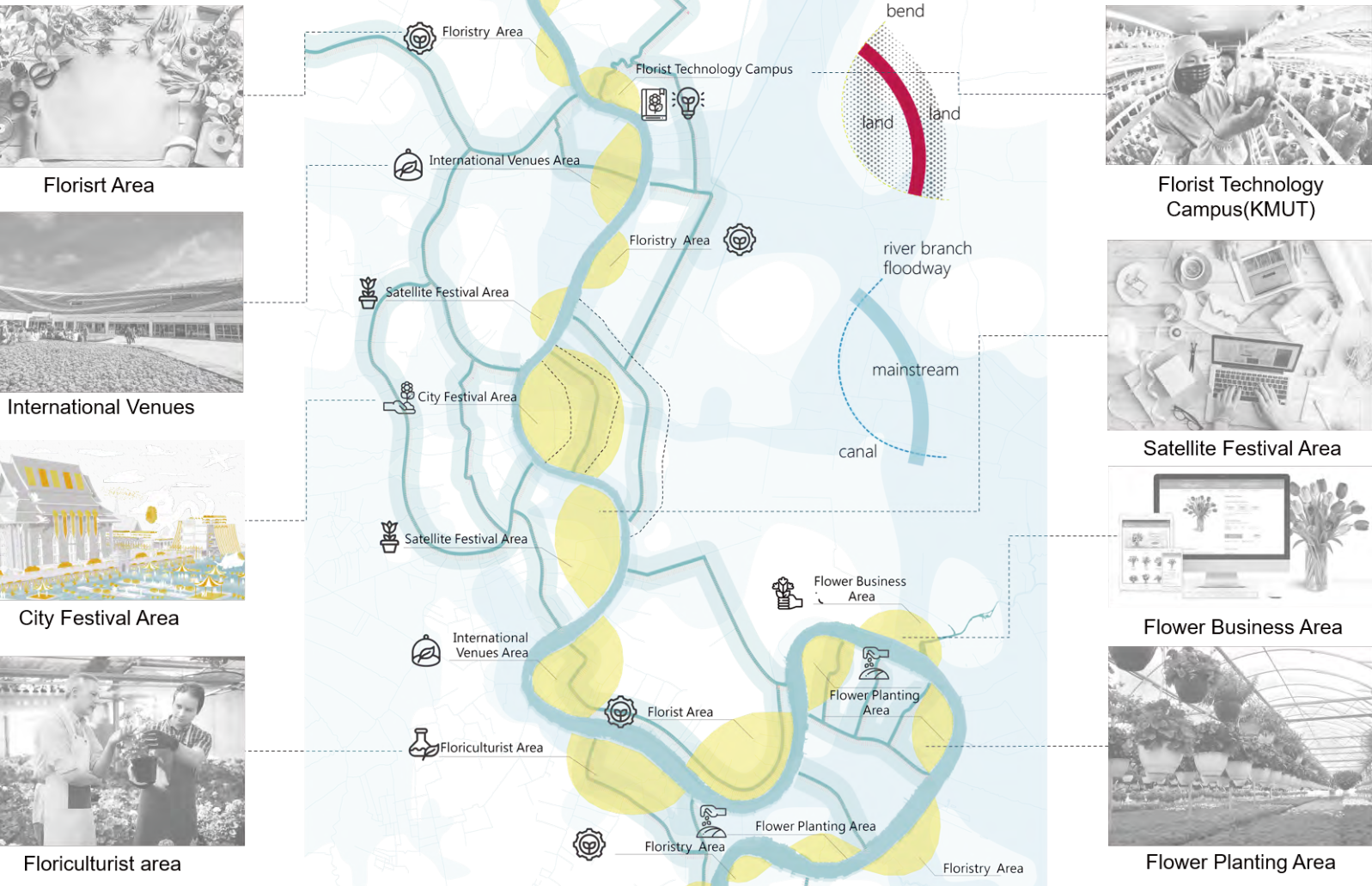
Before the modernization and Burbanization of Bangkok, the flooding of the Chao Phraya River was a natural phenomenon that was absolutely necessary to the agricultural society. The transportation, business, and daily life of people are intimately related to the mainstream and inland canals which were excavated in various periods of Bangkok history.



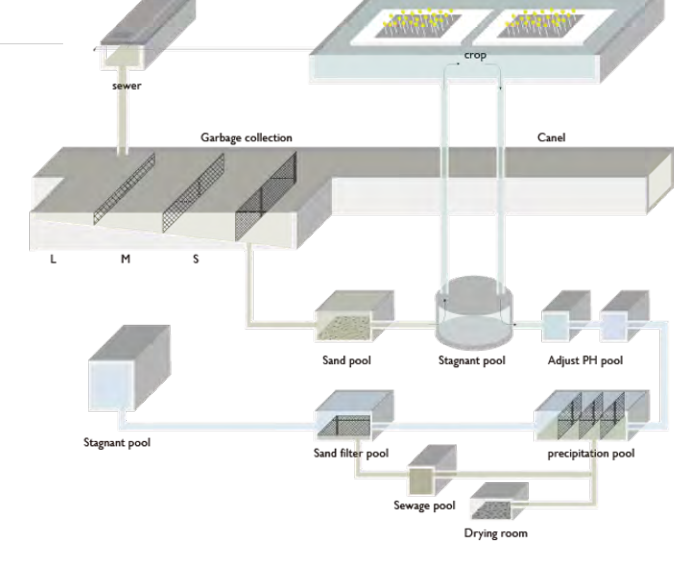
Space typologies study



Space imagination collage



Water System



Therefore, through the large-scale exhibition of flowers and flood, we propose a strategy of regeneration and intertwining for the river. Trying to open the water gates which are constantly closed to intercept the trash, the inland canals can once again restore their functions and play a role in sharing floods, transportation and leisure.

Along with the hustle and bustle of the Chao Phraya River, we propose to use the existing floodways and create some new bypasses in each river bends, then add the flower-related industries by the riverside as the curatorial theme. The main channel is intertwined with canals, and inflorescence zones, including large-scale planting, commercial of flowers, floral technology campus, flower cultivation area, international flora venues, satellite festival area, and city festival area, are arranged on both sides of the riverbank. We try to weave flowers and water into the banks of the river, that lack a holistic planning.

To make the water from heavy rain or monsoon flood go to the place we planned, where festival take place, we developed this water infrastructure system to merge the flower with the water.

